

# InfiNet Wireless R5000-Mm

InfiLINK 2x2 Family

## Unit Description

The R5000-Mm device is comprised of an Outdoor Unit and an Indoor Unit to be used as an integrated antenna high-capacity MIMO backhaul element. Implemented in a robust, all-weather metal enclosure, the R5000-Mm is an optimal choice for mid-to-long-range, high-speed Point-to-Point connectivity with real throughputs reaching 100 Mbps full-duplex. The R5000-Mm couples best-in-class spectral efficiency with multiple tools for link optimization, network integration and maintenance. In addition, the R5000-Mm possesses the unique ability to be used along with InfiNet Wireless TDM transport equipment to transmit up to 4 E1/T1 streams.



R5000-Mm

### Applications

- High-speed Point-to-Point backhaul element with integrated 23 dBi dual-polarity antenna

### Radio

- Modulation types: OFDM with BPSK, QPSK, QAM16, QAM64
- Frequency ranges: 5.150 - 5.845 GHz
- Channel widths supported: 40 MHz, 20 MHz, 10 MHz, 5 MHz
- Maximal net throughput:
  - Net capacity: 100 Mbps full-duplex (300 Mbps, 40 MHz channel width)
  - Net capacity: 106 Mbps TDD (130 Mbps, 20 MHz channel width)

### Wired Interfaces

- Wired network connection: Ethernet 100/1000BaseT (RJ-45) Optional dual Fast Ethernet
- Wired network interface: IEEE 802.3 CSMA / CD and Ethernet Blue Book
- Serial interface System Console Port
- Up to two Ethernet ports at Outdoor Unit (optional)

### Integrated Antenna Parameters

- Integrated Flat Panel Antenna (5.150 - 5.845 GHz only)
- 23 dBi gain
- Dual polarization
- Radiation pattern width: 9 degrees vertical, 9 degrees horizontal
- F/B ratio: 35 dB (min)
- Cross polar discrimination: 28 dB (according to ETSI EN 302 085 V.1.1.2 TS1-TS3)

#### Operating frequencies

5.150 - 5.250 GHz  
5.250 - 5.350 GHz  
5.470 - 5.725 GHz  
5.725 - 5.845 GHz

#### Output power

up to 63 mW (18 dBm)

#### Sensitivity

-74 dBm .. -101 dBm

#### Common distances

- 30+ km in Point-to-Point

### Radio Interface Features

- Superpacketing (voice/RTP aware)
- Channel Time Adjustment
- DFS (where applicable)
- "Long" mode for long distances
- Automatic bit-rate control
- Spectral efficiency up to 5.3 bit/Hz

### MAC-layer Features

- Proprietary dynamic adaptive polling:
  - Centralized marker grant mode
  - Dynamically takes into account low activity of the subscribers
  - Permanent channel testing
- ARP protocol support
- rSTP/STP protocol support (Spanning Tree Protocol)
- MAC/IP filtering
- Full-fledged 2nd layer switch:
  - Multiple switching groups
  - Full VLAN support (IEEE 802.1q)
  - Trunk groups support
- Pseudo-radio interface support (connecting backhauls via wired interfaces)

### Networking Features

- RIPv2 / OSPFv2 /static routing
- Tunneling (Ethernet over IP capable)
- IP-Firewall
- NAT (multi-pool, H.323-aware)
- DHCP client/server/relay
- Quality-of-Service:
  - 16 priority queues
  - vIEEE 802.1p support
  - IP TOS / DiffServ support
  - Full voice support
  - Traffic limiting (absolute, relative, mixed)
  - Traffic redirection

### Security Features

- Over-the-air encryption
- Storm / flood protection
- Password protection
- Protocol messages encryption

### Management Features

- SNMPv1 / SNMPv3 support (MIB II, private MIB)
- Configurable SNMP Traps
- Telnet
- Graphical User Interface (for Windows)
- Web-interface Configurator
- Remote Shell

### InfiNet Wireless

Office 731A, "Rumyantsevo" Business-Park, Build 1 / "A", Entrance 4, 7th Floor, Rumyantsevo Village, Leninsky District, Moscow Region, Russia, 142784

### General Features

- Multiple Radio Profiles
- Automatic over-the-air firmware upgrade

### Form Factor and Dimensions

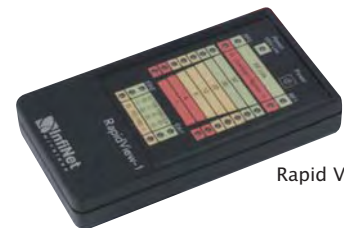
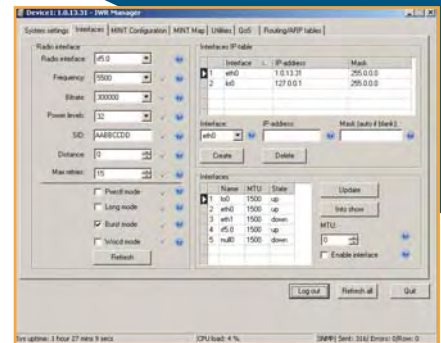
- Outdoor Unit (ODU):
  - Dimensions: 370 x 370 x 85 mm
  - Weight: 3.7 kg
- Indoor CPE (IDU-5000-CPE)
  - Dimensions: 50 x 46 x 23 mm
  - Weight: 0.3 kg

### Power

- Up to 15 Watts
- Consumption: 110-240 VAC @ 50/60 Hz

### Environmental

- Outdoor Units: -40..+60C, 100% humidity, condensing
- Indoor Unit: 0..+40C, 95% humidity, non-condensin



Rapid View-1



IDU-5000-2E1RJ

### Headquarters

Andrew Razumetz  
ar@infinetwireless.com  
Tel: +7-499-940-93-50

### Europe, Middle East & Africa Region

Carl Cag  
carlcag@infinetwireless.com  
Tel: +44-7753-691-642

Kamal Mokrani  
k.mokrani@infinetwireless.com  
Tel: +44-7802-337-530

### Asia Pacific Region

Dmitry Okorokov  
dmitry@infinetwireless.com  
Tel: +7-499-940-93-50

Michael Fun  
m.fun@infinetwireless.com  
Tel: +60-123-165-167

### Latin America Region

Anton Zhuravlev  
a.zhuravlev@infinetwireless.com  
Tel: +7-499-940-93-50

Phone/Fax : +7-499-940-93-50  
E-mail : sales@infinetwireless.com

[www.infinetwireless.com](http://www.infinetwireless.com)